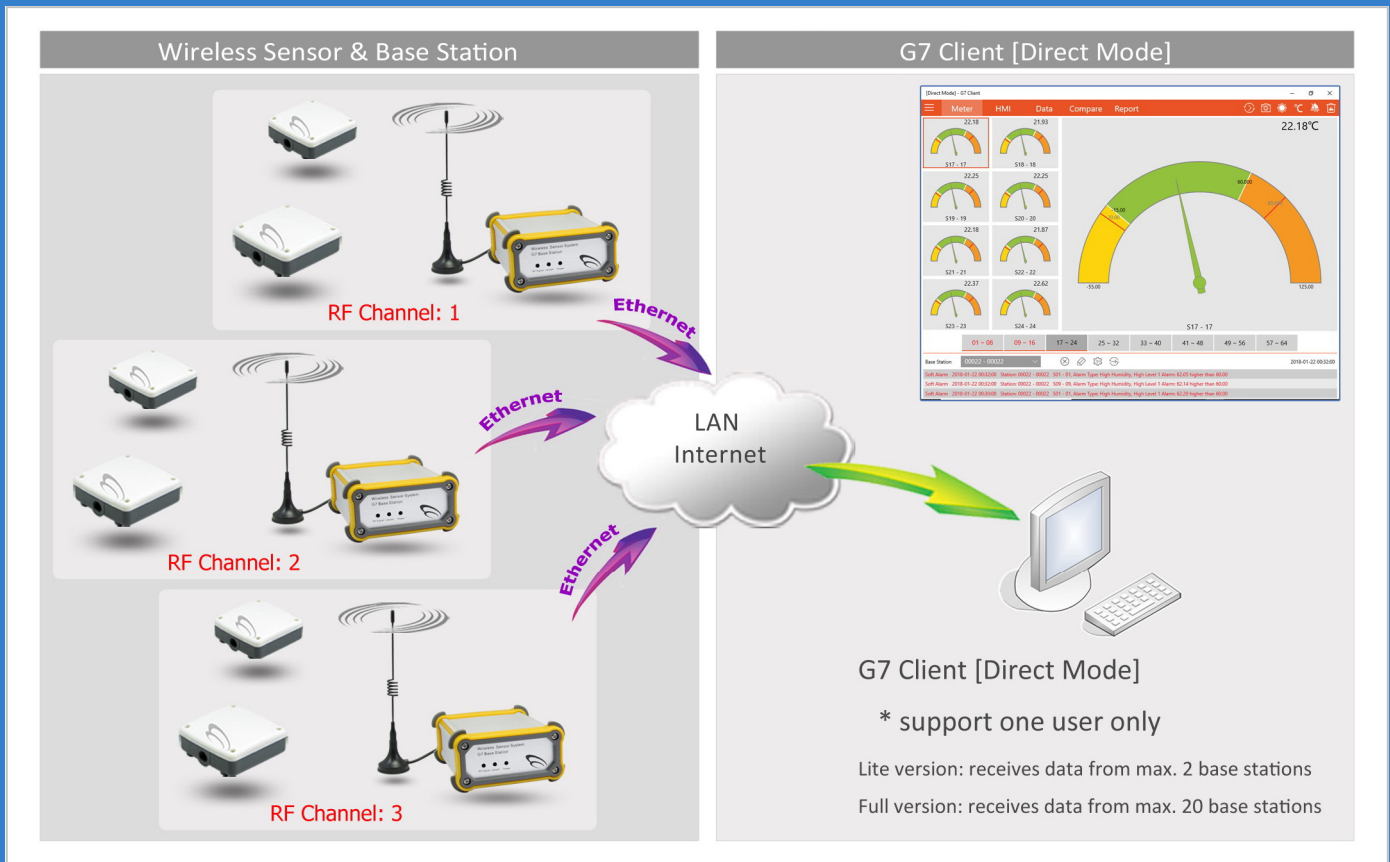


G7 Client [Direct Mode]



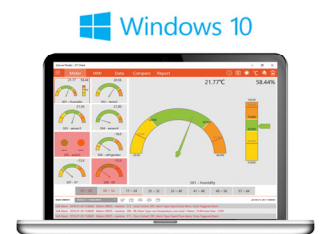
G7 Client for Windows, iPad, iPhone & Android Phone



G7 Client [Direct Mode] displays both live, historical data and analytical report in graphics mode.

1. Receive data from base stations directly, and refresh in interval automatically
2. Save data into local storage (Windows version)
3. Support wireless temperature, humidity, analog sensors and digital alarm
4. Alarm on higher/high/low/lower sensor reading or low battery level
5. Alarm on sensor defect and wireless communication loss
6. Alert user via on screen display and alarm email
7. Instant alert on digital alarm
8. Automatic page jump display allows up to 500 sensors data monitoring
9. Data Export as SQLite or cvs format for record
10. Display modes:

- Meter Screen
- Dashboard - 64 sensors single screen
- HMI (Human Interface Machine)
- Line Chart (comparison of sensors)
- Statistic & Tracking Report
- Alarm List



Data Tracking

Support Windows 10
Desktop & Touchscreen Mode

G7 Client allows user to track data from base stations directly:

- Live, Historical and Statistical Data Tracking in graphics mode
- Each client will be alerted when sensor reading is beyond the preset
- Client can be alerted by on screen display, audio buzzer and email
- Each client only with password will receive data from base stations
- Real time monitor up to 64 sensors on one screen, and max. 640 sensors in background

Key points:

- Max. 20 base stations supported in each licensed client
- Max. 64 wireless sensors data simultaneous real time display on single screen [DATA mode]
- Live alarm update, data monitoring and saving on background
- Simultaneous monitor of temperature, humidity, analog sensor and digital alarm
- Independent soft alarm levels of individual sensor [independent of Base Station device alarm]

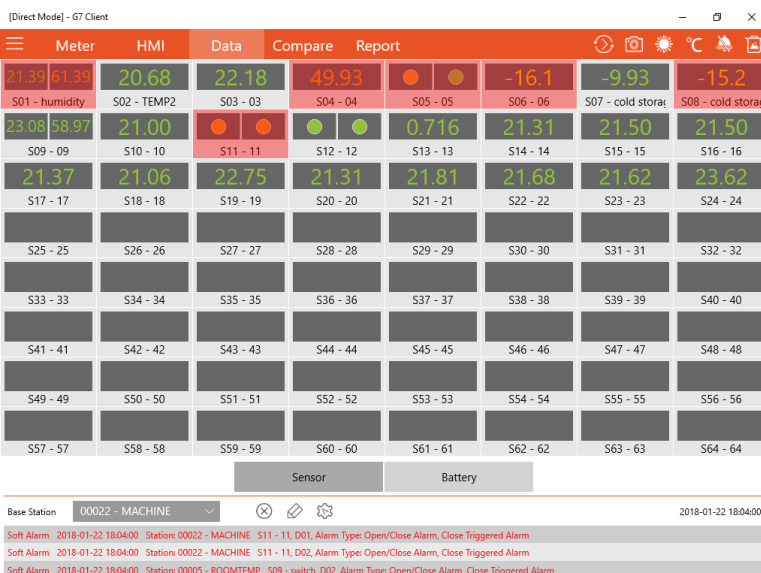
Meter Display

- Supports 8 sensors meter view each page
- Total 8 pages provide 64 sensors meter display for each base station
- Higher/High/Low/Lower Temperature, Humidity, Analog & Digital Alarm
- Low Battery Alarm
- Real Time Alarm Alert on screen and buzzer
- Temperature Unit Selection: C° & F°
- Background Alarm Listing



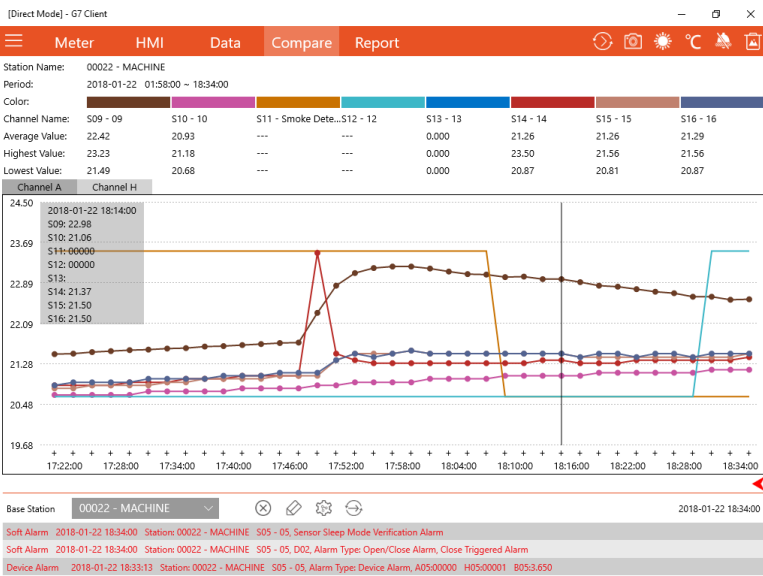
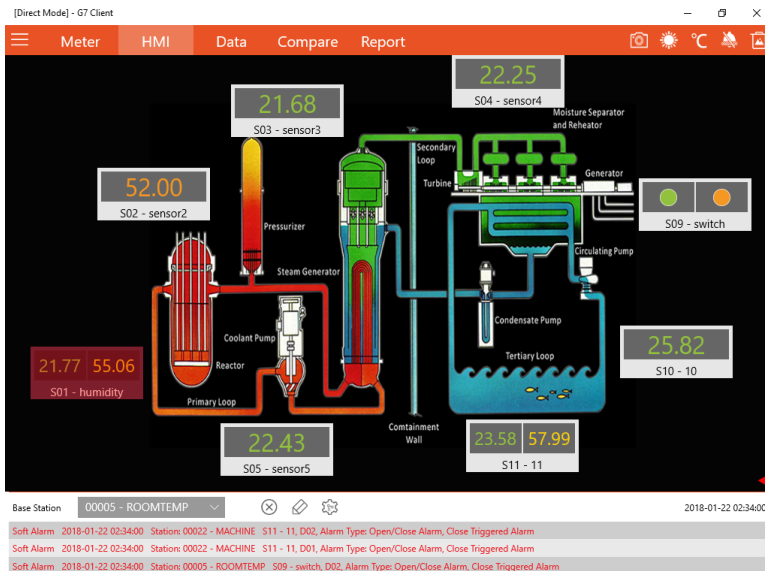
Dashboard

- Max. 64 sensors on one single screen
- Selection of sensor and battery reading display
- Higher/High/Low/Lower Level Alarm for Temperature, Humidity, Analog Sensors
- Instant Digital Alarm
- Real Time Alarm Alert on screen and buzzer
- Temperature Unit Selection: C° & F°
- Background Alarm Listing



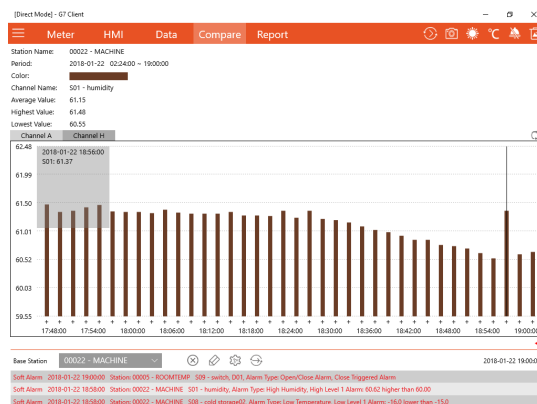
HMI Display

- Max. 64 sensors in each HMI picture
- High/Low Temperature Humidity Alarm
- Low Battery Alarm
- Both Live & Historical Data are supported
- Real Time Alarm Listing
- User selectable import of jpg picture



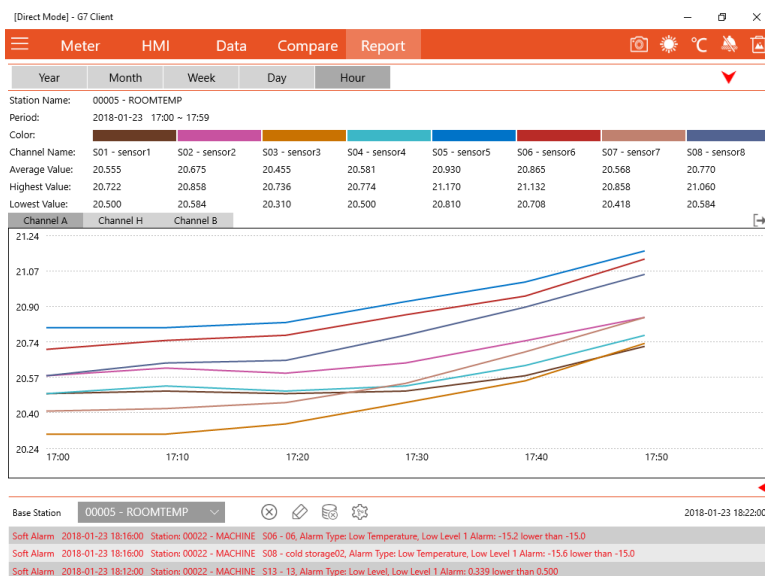
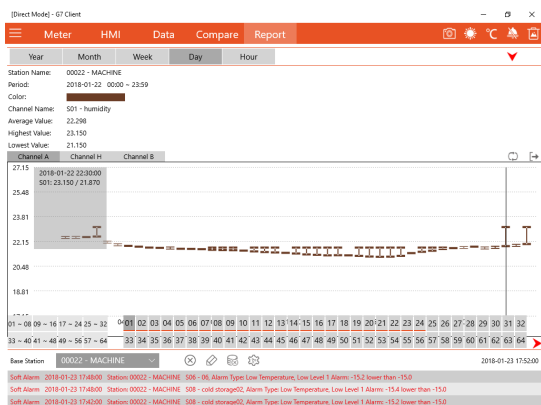
Line Chart Comparison

- Max. 8 sensors in single chart
- Total 8 groups comparison for 64 sensors
- Live & Instant Historical Data comparison
- Line or Column Chart style user selectable
- Time Line automatic scale



Statistic Report

- Max. 8 sensors in single chart report
- Total 8 groups comparison for 64 sensors
- Statistical Data comparison
- Line or Column Chart style user selectable
- Time Line Scale selectable (day, week, month, year)
- User selectable historical period



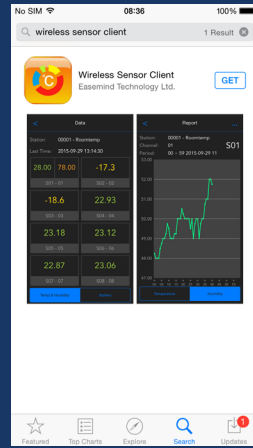
Simple & User-Friendly Graphics

G7 Client [Server Mode] for iPhone & Android Phone:

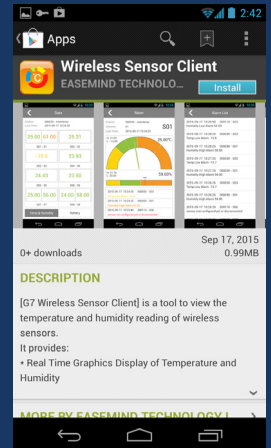
- User friendly operation on touch screen, Fast response and crystal clear display
- Instant live and historical data display, alarm alert
- Support Server Mode only

Features:

- * Meter View
- * Dashboard
- * Alarm List
- * Line Chart
- * Statistic Report

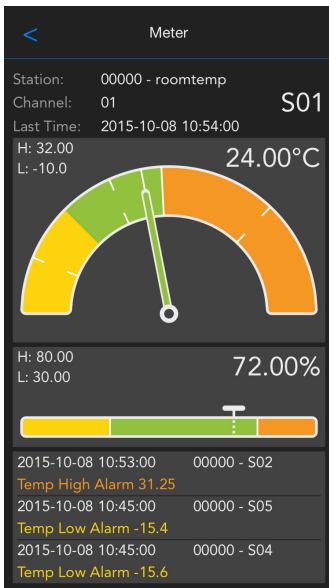


iPhone



Android Phone

Meter View



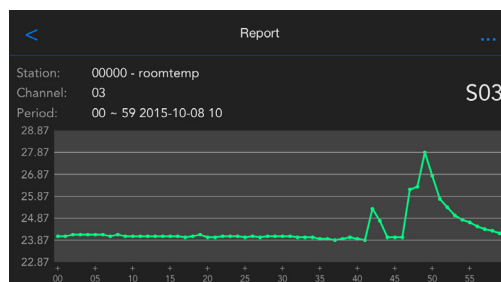
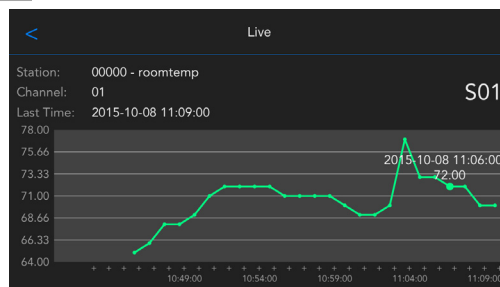
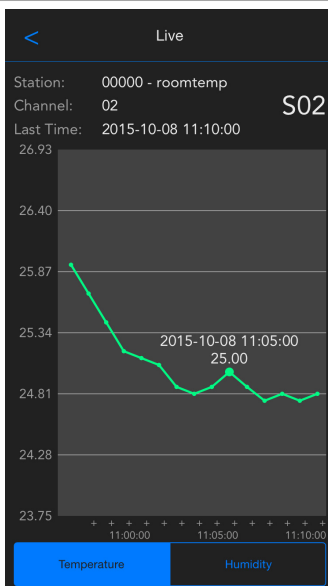
Dashboard



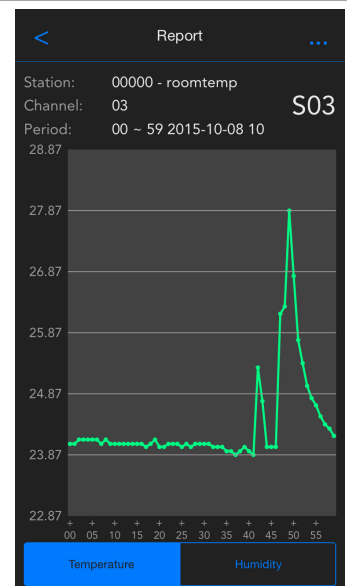
Alarm List

Time	Station	Alarm Type
2015-10-08 11:11:00	00000 - S05	Temp Low Alarm -16.0
2015-10-08 11:11:00	00000 - S04	Temp Low Alarm -16.3
2015-10-08 11:10:00	00000 - S05	Temp Low Alarm -16.0
2015-10-08 11:10:00	00000 - S04	Temp Low Alarm -16.3
2015-10-08 11:09:00	00000 - S05	Temp Low Alarm -16.0
2015-10-08 11:09:00	00000 - S04	Temp Low Alarm -16.2
2015-10-08 11:08:00	00000 - S05	Temp Low Alarm -16.0
2015-10-08 11:08:00	00000 - S04	Temp Low Alarm -16.2
2015-10-08 11:07:00	00000 - S05	Temp Low Alarm -16.0
2015-10-08 11:07:00	00000 - S04	Temp Low Alarm -16.2

Line Chart



Report Display



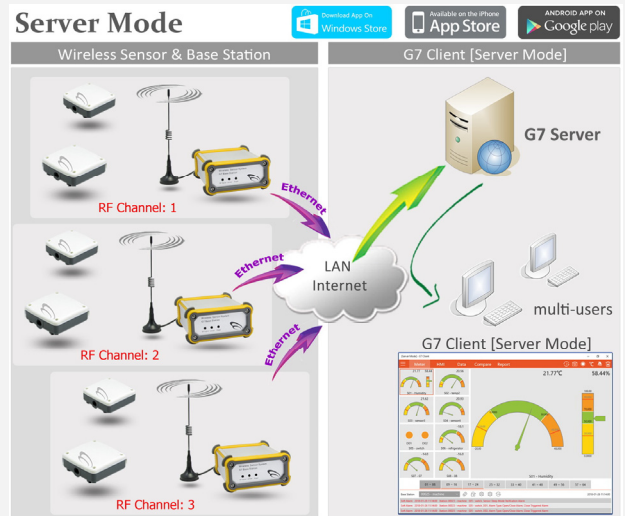
Server / Direct Mode Access

G7 Client [Server Mode] - free bundled with G7 Server package

- Each base station receives data from max. 64 wireless sensors
- G7 Server receives data from max. 99999 base stations simultaneously
- Max. 999 client users can retrieve data from Server simultaneously
- Each client user can retrieve 20 base stations data simultaneously
- Access of both live and historical data from Server

Alarm

- Independent sensor alarm setting of each user
- Remote alarm configuration by administrator
- G7 Server delivers alarm Email and SMS
- G7 Client delivers alarm Email on its own alarm setting

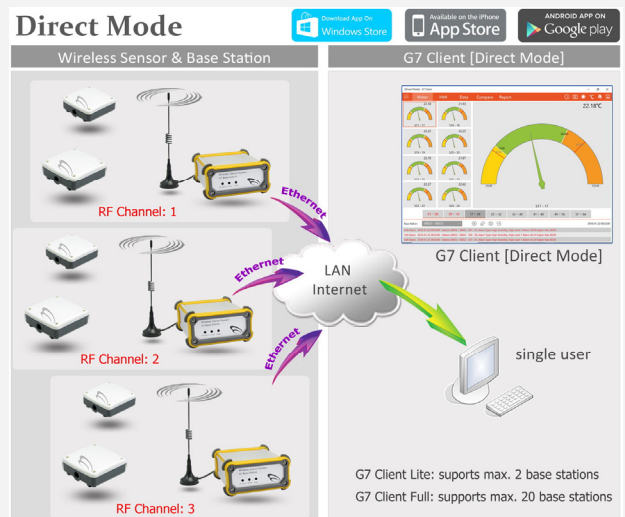


G7 Client [Direct Mode] - free download

- Each base station receives data from max. 64 wireless sensors
- Each base station uploads sensors to one single client user
- G7 Client Lite [Direct Mode] - free
 - Each single client user accesses max. 2 base stations
- G7 Client Licensed [Direct Mode]
 - Each single client user accesses max. 20 base stations
- Local storage of incoming data from base stations

Alarm

- Alarm email delivered from G7 Client PC
- Sensor alarm setting for one single user only



Data:	Live, History, Statistic
Meter Screen:	max. 8 sensors one screen 8 screens each base station
HMI Display:	max. 64 channels
Line Chart:	max. 8 channels 8 charts each base station
Dashboard:	max. 64 sensors one single screen
Report:	Statistic & Comparison Hour, Day, Week, Month, Year
Alarm:	User programmable high/low
Alert:	Email, Visual & Buzzer

Client Versions

G7 Client	Server Mode	Direct Mode	Direct Mode
	Free	Licensed	Free
Version	Full	Full	Lite
Data Source	G7 Server	Base Station	Base Station
No. of base stations	99999	20	2
Simultaneous users	999	1	1
Alarm Setting	Server & Local	Local	Local
Background Operation	Support	No	No